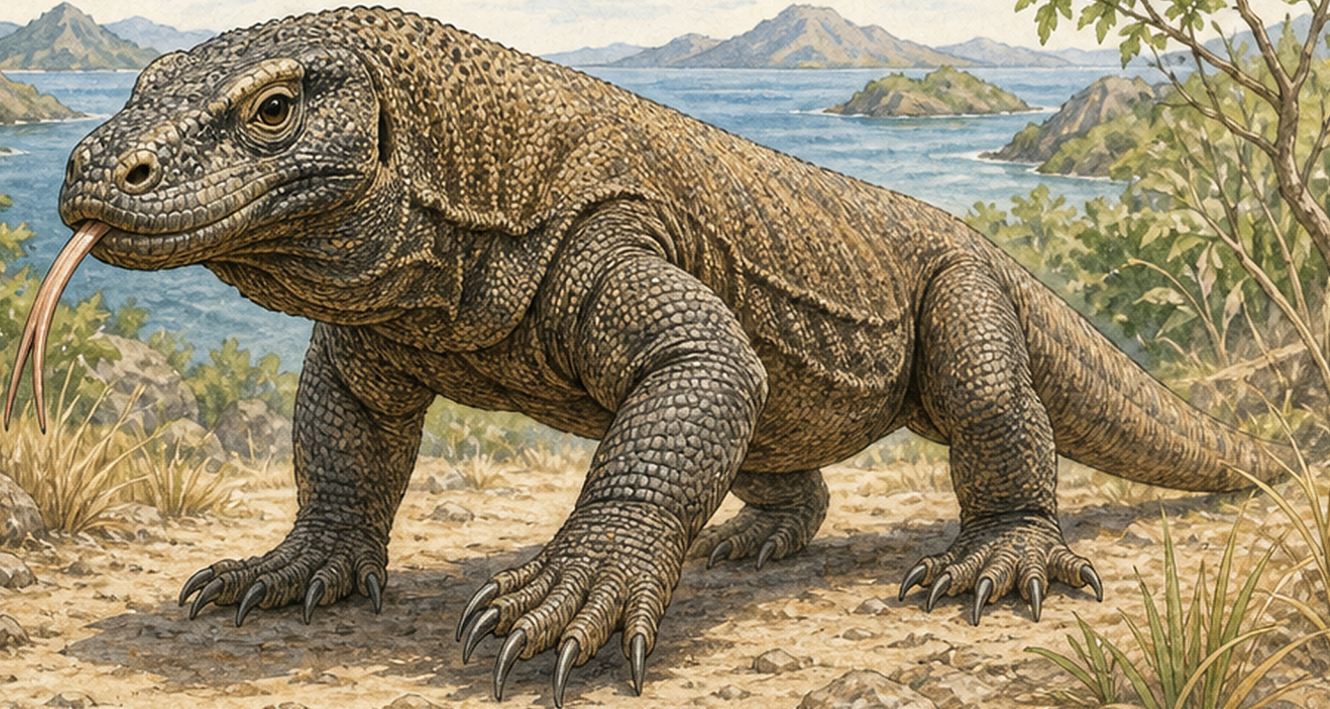


Komodo Dragon Facts Workbook

A printable AnimalSake activity pack

Name: _____



Read



Match



Strong
claws



Powerful
tail



Forked
tongue



Keen
senses

Observe



What details do you see?

Quiz

1. Where do Komodo dragons live?
 A B C
2. What do they use to smell?
 A B C
3. How do they help farmers?
 A B C
4. What are they excellent swimmers?
 A B C
5. How long can they live?
 A B C

Komodo Dragon Facts

The world's largest living lizard

Where they live



Komodo dragons live on a few Indonesian islands, including Komodo and Rinca.

How they sense food



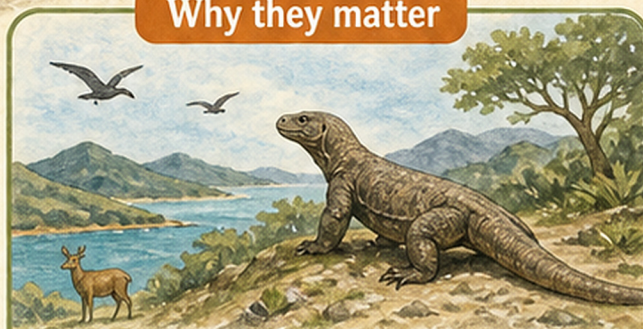
A forked tongue picks up scent particles and helps them find food.

Built strong



They have powerful legs, sharp claws, a long tail, and a strong bite.

Why they matter



Komodo dragons are top predators that help keep island ecosystems balanced.

Quick Words



Reptile:
an animal with dry scales



Carnivore:
an animal that eats meat



Predator:
an animal that hunts other animals

Match the Komodo Adaptation

Draw a line from each body part to how it helps.

Body Part

1.



Forked tongue

2.



Strong claws

3.



Long tail

4.



Scaly skin

5.



Powerful legs

How it helps

A.

Grips the ground while walking

B.

Helps balance the body

C.

Protects the body like armor

D.

Picks up smells from the air

E.

Digs and holds food

Think Like a Scientist

Which adaptation would help most on rocky island ground?

My answer: _____



Komodo Island Habitat

Explore where Komodo dragons survive.

Island clues



Dry grassland



Rocky hills



Warm sunshine



Coastal forests



Nearby ocean

Habitat Map

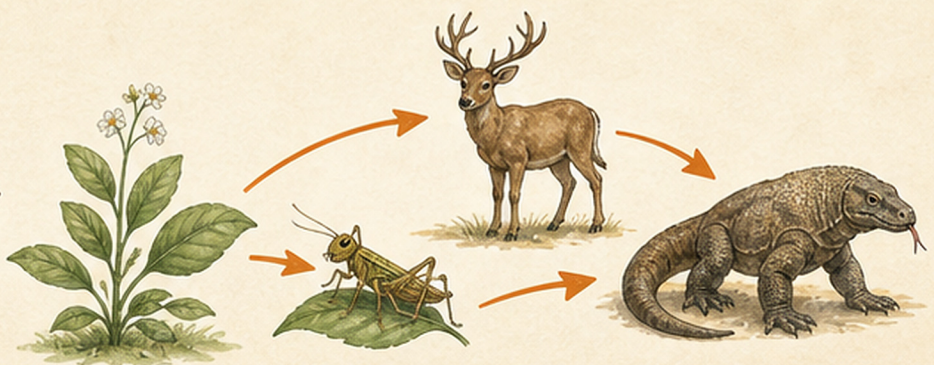
Label these places:

1. rocky hill
2. grassland
3. forest edge
4. coast



Food Web Clues

- Plants feed insects and deer.
- Deer and other animals feed predators.
- Komodo dragons are top predators.
- A healthy habitat has many connected living things.



Komodo Observation Log

Observe from videos, books, or a safe distance at a zoo.

Date: _____

Where I observed: _____



What the Komodo dragon looked like

Color: _____

Body shape: _____

Skin texture: _____

Draw the habitat

What it was doing

- walking
- resting
- smelling with its tongue
- looking around
- other: _____

 I noticed: _____

 I wonder: _____



Safety note

Never approach or touch wild reptiles.



Komodo Quick Quiz

Circle the best answer.



1.

1. What kind of animal is a Komodo dragon?

A reptile

B bird

C mammal

2.

2. Where do Komodo dragons live?

A Indonesian islands

B Arctic ice

C deep ocean

3.

3. What helps them smell food?

A forked tongue

B feathers

C wings

4.

4. What does top predator mean?

A an animal high in a food chain

B a plant with flowers

C a baby animal

5.

5. Which body covering do Komodo dragons have?

A scales

B fur

C feathers

Bonus Draw

Draw a Komodo dragon habitat.



Answer Check

1 A

2 A

3 A

4 A

5 A